





Adjust platform for you and your customers

4 - 5

We know that partners and customers have their own vision, which is what we realize in the WEB-SAT platform



Advanced crash detection and analysis tools

6 - 7

Our crash detection system is an advanced module, created to support collision detection by devices, then proceed with an advanced algorithm in real time to prepare reliable information



Optimize the cost of your fleet and make it safer

8 - 9

Fully dedicated module related to financial and safety optimization



Professional tachograph analysis of driving time

10

DDD and D8 data analysis with real time notification and report system according to Art. 10.3 EU Reg. 561/2006



Maps services that the platform supports

11

One map service is not enough to make every customer happy. That's why we combine the two most important ones to create a powerful solution based on Google/Emapa/TomTom



Dedicated solutions created for our partners

12

CMC Transport Manager was one dedicated project implemented to easily meet customers' expectations. The solution contains internal audit application and reports for managing and controlling transport



Mobile version, Super Admin platform, Garmin support

13

The WEB-SAT mobile app provides the most important features from the WWW platform. Garmin helps drivers to be in touch with dispatchers - communicate with them, send documents, and receive routes



We would like to welcome you as a WEB-SAT partner

14

The list of selected partners that support the WEB-SAT solution extends all over world. We would like to invite you to join!

About us

We are a team of developers with experience gathered over 15 years. Our solutions are based on the newest, the most efficient and the most stable technologies. WEB-SAT Platform was designed to guarantee the highest level of performance in the simultaneous client growth. The platform is being constantly improved. WEB-SAT continuously researches for technical innovations, to be a leader in the market. The headquarters are based in Poland. Company has foreign branches and a partner channel, actively developing products and building global sales.

WEB-SAT offers users a whole package of benefits: savings, increased efficiency and effective control. WEB-SAT platform allows you to tackle many of your customers' fleets, including unreasonable costs, poor performance, redundancy, or private use.

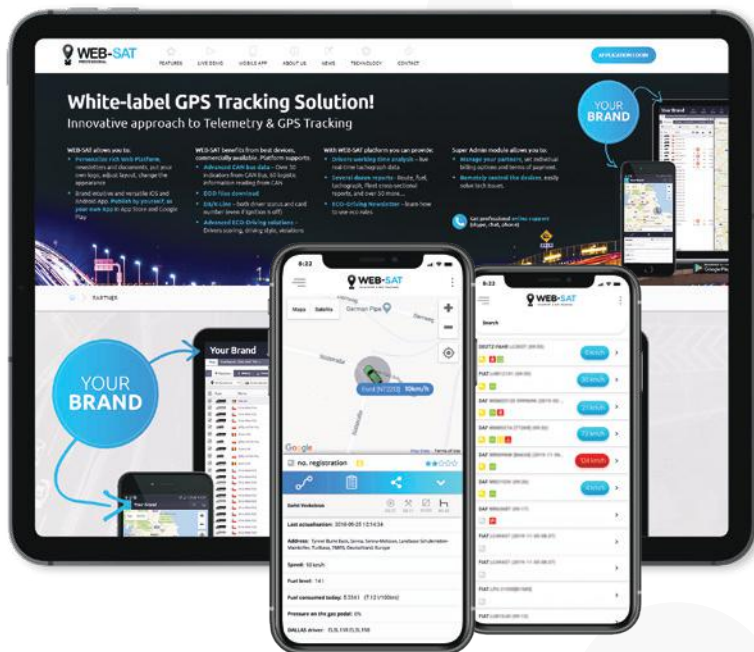
Why WEB-SAT?

Our mission is to adjust the application to the requirements of our partners and customers. We work with an individual approach and involvement in the project. Thanks to these business values we build strong relationships. Our products such as CAT or Cash Saver were invented and implemented 100% according to our vision. TachoPremium, Google Maps/Emapa/TomTom were developed for the individual needs of our partners. WEB-SAT loves challenges – we can implement every specified module, application, or requirement.



WEB-SAT White Label Platform

Personalize our rich web platform, newsletters and documents, add your own logo, adjust layout, change the appearance.



The platform brings all the information you need in one dashboard. Use all Google Maps advantages. Open the apps and reports you need in internal tabs. Use unique Tachograph data analysis and easy DDD files download feature. Now you can schedule your downloads and data will be automatically transferred to the platform or synchronize the downloads with your FTP server.

ECO-Driving scoring provides reliable data about the driving style of your drivers. WEB-SAT reviews eco-driving abilities. WEB-SAT sends newsletters with detailed information about driving dynamics, brakings, accelerations and work of the engine.

Elements that can be personalized:



Web platform

Use your own logo, set preferred appearance and language



Super Admin

Manage your customers, users, devices, sim cards, payments, etc with your own Administration System



E-mail server

Send notifications, scheduled and DDD reports and billings with your own e-mail address



Tailor-made

Get dedicated individual functionalities just for your platform



Mobile apps

Publish as your own application in Google Play and Apple Store



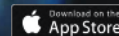
Domain

Use your own logo, set preferred appearance and language



SMS Gateway

Choose your own SMS Gateway to send SMS notifications and alerts



App main features:

Fleet status

- Positions
- History
- Zones
- Planning
- Distance
- Animation
- Analysis of driver working time

Google Maps

- Real time traffic information
- Roadmap, satellite, hybrid
- Speed limits
- Advanced route planning
- Search on map (address, company name, post codes)

Vehicle status

- Current speed, mileage, fuel
- Tachograph data
- Smart analysis of driver working time
- Engine parameters
- Fuel consumption
- Device and GPS activity
- CAN Indicators

Reports

- Route, fuel, daily distance, stops, tachograph, eco-driving, ignition, zones
- Drivers working time, vehicle driving time
- Fleet cross-sectional reports
- And over 50 more...

CAT Crash Analysis Tools

Use the live timeline panel with Google Street View
20-second cycle of detailed analysis

Precise data driven by:

- ✓ GPS
- ✓ 3D Accelerometer
- ✓ Google Maps with road speed limits, satellite and street view
- ✓ CAN Data





Crash Analysis Tools

- The CAT application allows one to analyze a road accident with high precision. CAT presents data ranging from 10 seconds before to 10 seconds after the road accident.
- CAT Give every user instant access to the smart timeline panel with Google Street View, impact data, force directions and more.
- Accident data is stored on the cloud and available from any computer with internet access.
- At the time of the accident, data is automatically sent to the Crash Analysis Tool server. AI analysis allows for easy reconstruction of the accident.
- Telematics devices with the BlackBox feature allow recording of data with a very high frequency. Data is stored in the cache in the time loop, which contains all the parameters.

Cash Saver

A fleet management system which analyzes the costs of the vehicle fleet in the company

Driven by the telematics data from the GPS Terminal connected to the CAN BUS.

The device installed in the car captures 14 key data related with the eco driving. Data is read at the frequency of 1 second. A smart algorithms gather the histogram and standard data frames. This intelligent approach helps us to achieve a high frequency of data reading with a slight increase of GSM data transfer.

Eco and safe driving requires the driver to use slightly different driving techniques in the city, extra-urban zones, and on the highway. AI implemented in the Cash Saver identifies the actual driving mode and adjusts the measured parameters for individual driving modes.

Cash Saver is unique in the way it scores styles of driving. Most measurements are based on the traveled distance, not the number of exceeding. It allows you to very precise determine the drivers' behavior, as well as determine whether his behavior is incidental or permanent.

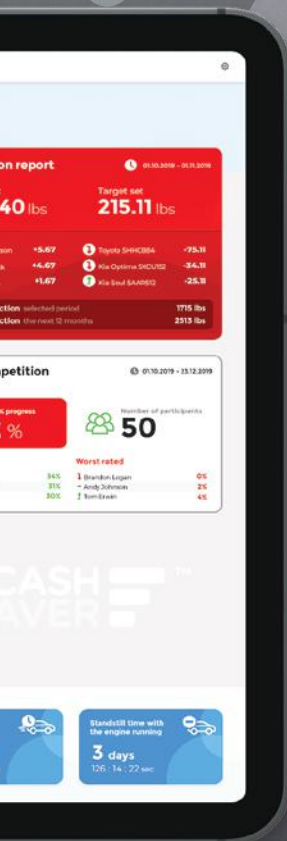
Prepare the competitions for the drivers and motivate them for safe and eco driving. The competition report shows the results of individual drivers, score and their place on the list in relation to the goal.

Discover the Cash Saver mobile application (iOS, Android). Learn how to improve your driving skills to get better results.

Analyzed data:

- RPM
- Car speed
- Pressure on the gas pedal
- Engine braking
- Distance traveled at a constant speed
- Driving smoothness
- Aggressively cornering
- The right gear for the current speed
- Heavy braking
- Rapid acceleration
- Kickdown
- Exceeding the speed limit
- Idling
- Stands with the engine running





Tacho Premium **Alerter**

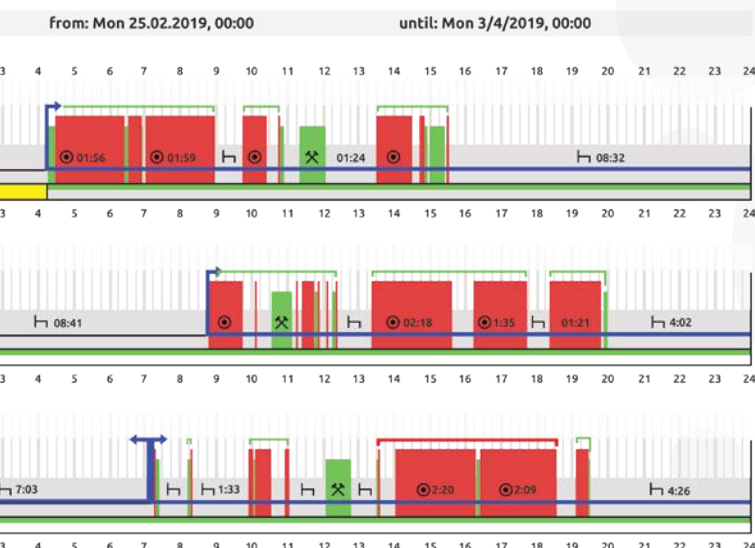
Infringement Alert

- Current and precise analysis of drivers' working time within range of 29 days
- Direct guidance for driver before committing an offense
- The history of alerts and advice sent to drivers constitutes legal protection, in accordance with Art. 10.3 EU Reg. 561/2006
- 100% compatibility with EU Regulations and 561/2006 EC Regulation
- Calculation of penalties according to the local penalty tariffs
- Data available to driver in Garmin and Android/iOS mobile applications
- Multilingual system service



Tacho Premium **Report**

Unbeatable solution for controlling and analyzing drivers working time.



- Over 20 PDF and XML vehicle reports and driver's working time analysis, available in over 15 languages with all EU tariffs
- Penalty calculation based on 15 European tariffs
- Analysis of work time violations, breaks and rest periods according to EC 561/2006
- The algorithms are used by 18 European control services, such as Police, Road Transport Inspections and Labor Inspections
- Ability to generate reports according to penalties in many languages
- In case of imposition of excessive penalties due to driver or company inspection, additional legal advice may be agreed in order to minimize penalties

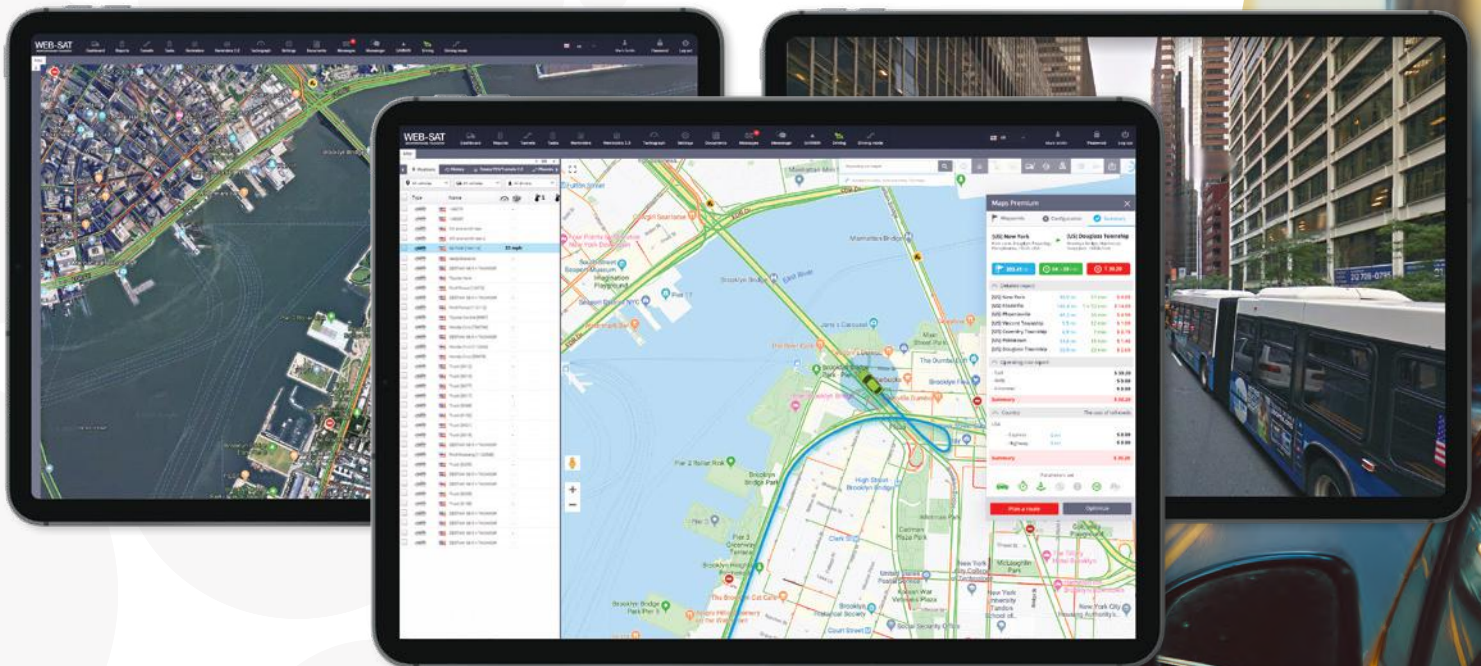
Maps services integrated in **WEB-SAT/CAT/CASH SAVER/Mobile platforms**

Get complete control of your routes and calculate trips for the standard passenger cars, vans and trucks.

Powered by TomTom and Emapa platforms.

Google Maps

- ✓ Road map, satellite, street view, always up to date (newest map with every refreshment)
- ✓ Live traffic – Google Maps helps you to get the right directions to go anywhere by real-time traffic monitoring
- ✓ Autocomplete – automatic suggestions while searching for the destination point
- ✓ Vehicle grouping on map will optimize the display of many objects



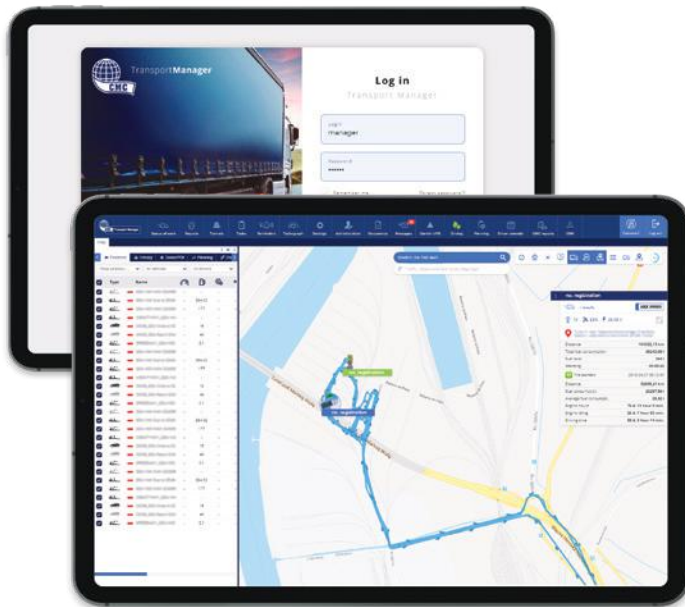
Emapa/TomTom

- ✓ Define individual profiles for every vehicle assigned to WEB-SAT: GVWR, axle load, height, width, number of axles, emission certification and fuel type
- ✓ Deliver costs of vehicle use (fixed, mileage, hourly, fuel), cost of the driver mileage, hourly
- ✓ Get the precise route layered on Google Maps
- ✓ Read additional trip costs for the toll roads
- ✓ Read the accurate trip time for passenger car
- ✓ Deliver accurate truck trip time taking into account the driving time regulations
- ✓ Optimization - accelerate your deliveries with trip optimization. Automatically sort the route points in the most effective way!

Dedicated platform

Example of dedicated platform created for Our Customer

WEB-SAT engine was implemented to easily meet the customers' expectations, in building his dedicated product. The case in point is WEB-SAT web application adapted to Commercial Metals Company (CMC) company, named Transport Manager.



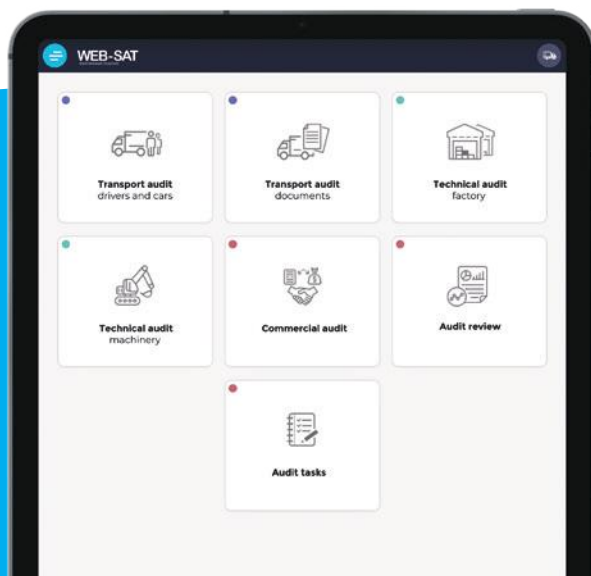
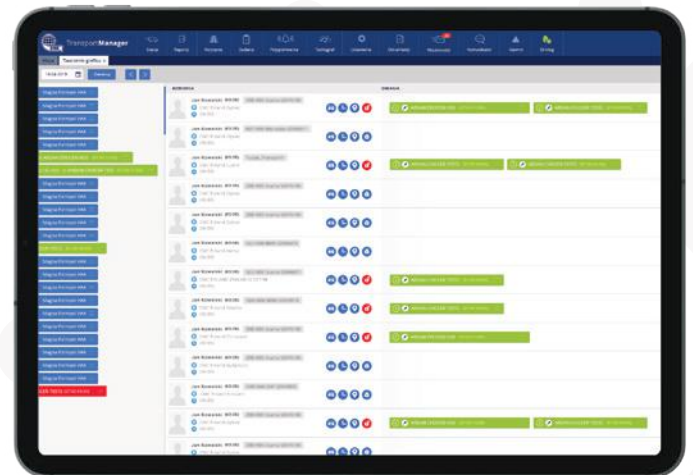
- ✓ **Dedicated application layout**
- ✓ **Login page**
- ✓ **Domain name**

Commercial Metals Company (CMC) is a global company which manufactures, recycles and markets steel and metal products, related materials and services. The company operates in the area of USA, Europe, Australia, Asia, and has its own branches in the 8 countries.

CMC Poland Sp. z o.o. is the Polish branch based in Zawiercie, Poland, with the steel mill and dozens of locations throughout the country.

Dedicated reports especially for managing and controlling the CMC transports

- List of requests
- Composer of drivers' schedule
- Weekly tasks overview
- Printing and previewing of the drivers' tasks
- Accounting and verifying of containers
- Detailed transport costs report
- Containers stocktaking and rotation
- Tasks status report



Internal audit application

Implemented for the individual customers' specification. Makes collecting of hundreds of data easy. The auditing application is divided into the following sections:

- Driver and transport
- Transport documentation
- Technical of facility
- Technical of machine
- Commercial



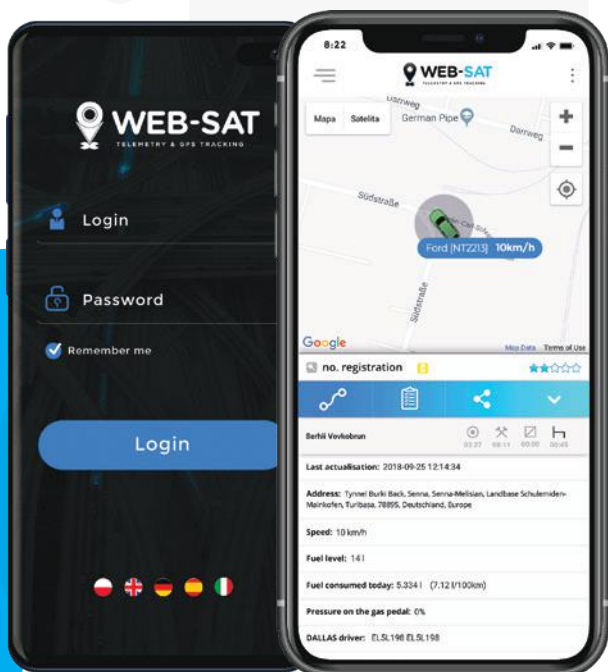
Super Admin Application

Dedicated platform to manage all devices on one account. Created in a special way to make it easier and as fast as possible! Support your partners, set individual billing options and terms of payment. Remotely control, configure and update the devices to easily solve tech issues. Create users, set permissions, grant permissions, and assign to branches.

GARMIN

WEB-SAT is fully integrated with GARMIN. A company with more than 11,500 associates in 60 offices around the world, GARMIN bring GPS navigation and wearable technology to the automotive, aviation, marine, outdoor and fitness markets. GARMIN thinks every day is an opportunity to innovate, and a chance to beat yesterday.

- Communicate and set a route for your drivers.
- Control the progress of assigned tasks.
- Send photos, scan documents, react immediately to dynamic changes.



Mobile application

View your fleet from your smartphone as you do from the office, whether you're in the field, in meetings, or at the airport. The native mobile app gives you full functionality, not just mobile web browsing. It is based on Google Maps API with satellite, traffic, street view support. Features:

- iOS and Android versions
- Publish by yourself, as your own app in the App Store or Google Play
- Check ECO-Driving scoring as driver or account manager
- Users (Drivers) can use internal messages to accept their tasks or send information to the dispatcher
- Brand intuitive and versatile
- Can contain all features that were created in WWW platform

WEB-SAT official and trusted Partners

We are happy that the WEB-SAT platform has many local offices all over the world. Individual contracts, market exclusiveness, a dedicated platform and realtime support: that all come in one package.

In Poland there are **38 partners** with the dedicated platform, with **72 total offices all over world.**



Check it out for **free now!**

WEB-SAT Headquarters

Warsaw, Sosnkowskiego 1, 02-495
Katowice, Sobieskiego 11/E6, 40-082



+48 505 184 788



sales@web-sat.com

WEB-SAT Pro

Rob Verhagen
PO BOX 652, Boronia 3155, Victoria, Australia



+61 414866752



rob@web-sat.com

WEB-SAT Germany

Crout GmbH
Echterdinger Str.57
70794 Filderstadt



+49 7114903555



frank@web-sat.com

WEB-SAT Pro

Dan Shaw
3 Tamworth Road,
Coventry CV6 2JH



+44 07947670844



dan.shaw@web-sat.com

WEB-SAT UAE

Apogee Information Services (FZC),
P8-07-22, P.O. Box 120652,
Sharjah Airport International Free Zone (SAIF),
Sharjah, United Arab Emirates



+96 550068743



paul@web-sat.com

WEB-SAT Chile

Av. Apoquindo 6410,
oficina 202, Las Condes
Santiago, Chile



+56 2-2840 0987



info@websat.cl

An aerial photograph of a city intersection. In the center, a white truck with a red cab is positioned within a large yellow-painted rectangular box. The box has a large 'X' inside it. The surrounding area includes crosswalks with yellow stripes, other vehicles, and buildings. The text 'Web-sat' is overlaid in the top center.

Web-sat

Power of technology



WEB-SAT



WEB-SAT

TELEMETRY & GPS TRACKING



Polska



**European
Funds**
Smart Growth



**Republic
of Poland**

European Union
European Regional
Development Fund



WEB-SAT
TELEMETRY & GPS TRACKING



WARSAW | KATOWICE | POLAND

E : sales@web-sat.com

P : +48 505 184 778

W : www.web-sat.com